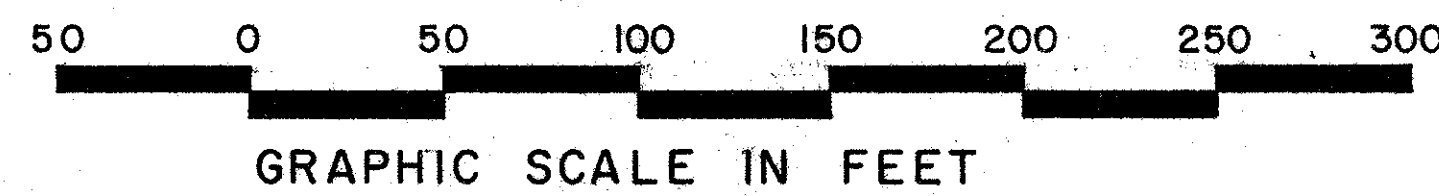
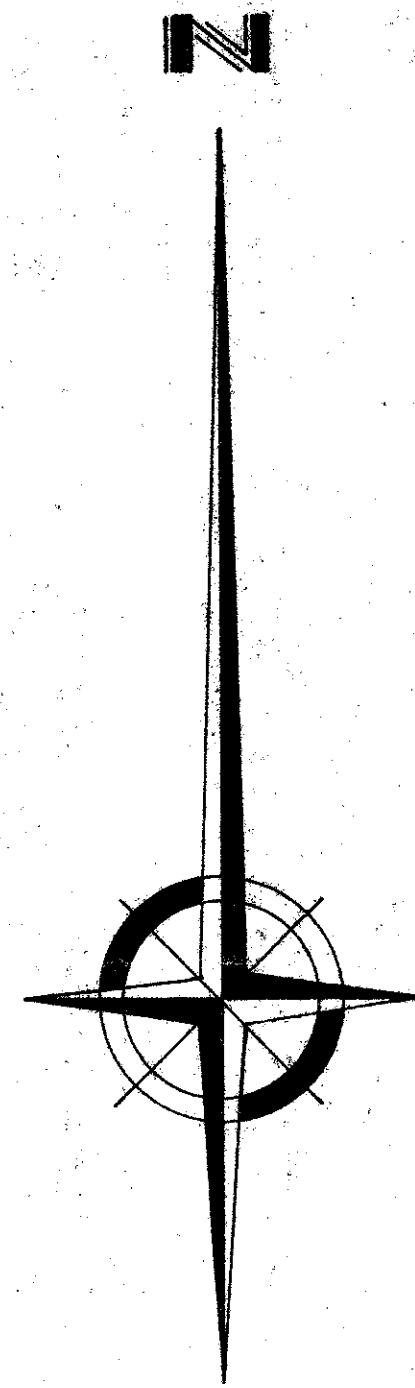


PLAT NO. 3 "THE FOREST HOMES"

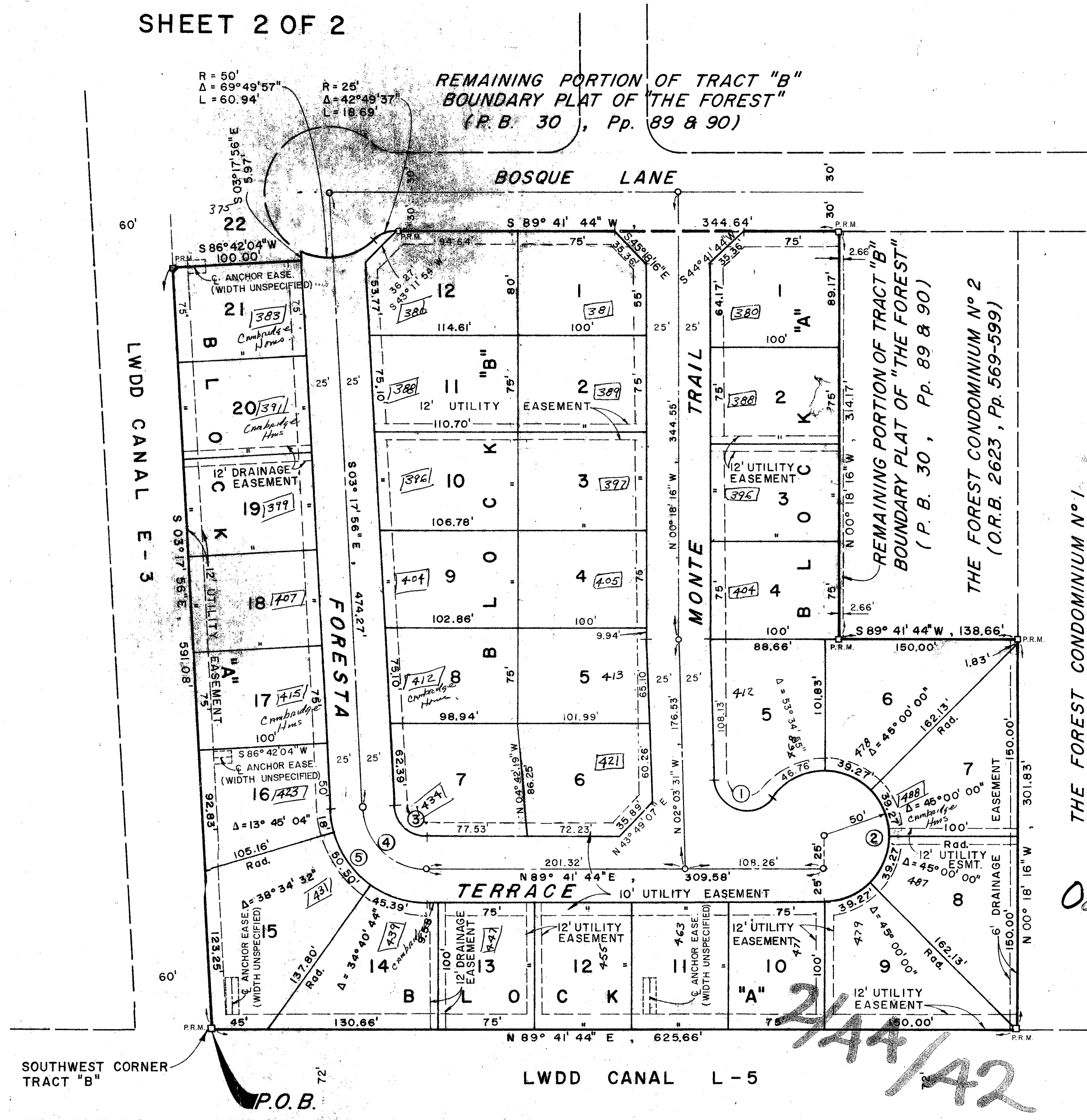
PALM BEACH COUNTY, FLORIDA
SHEET 2 OF 2

10



CURVE DATA

N ^o	Δ	R	T	L	LC
1	143° 34' 55"	25'	76.00'	62.65'	47.50'
2	238° 22' 18"	50'	208.02'	87.30'	87.30'
3	87° 00' 20"	25'	23.73'	37.96'	34.42'
4	87° 00' 20"	50'	47.45'	75.93'	68.84'
5	87° 00' 20"	75'	71.18'	113.89'	103.26'



0243-001 (32)

36/10

THE FOREST HOMES

Field Book No. Pg.	ROBERT E. OWEN & ASSOCIATES, INC. ENGINEERS · PLANNERS · SURVEYORS WEST PALM BEACH FLORIDA	Job No. 77-1159
Design C. GIVENS		Scale 1" = 50'
Drawn C. GIVENS		Date MAY, 1978
Checked		Sheet of 2 2
		File No. BF-2194-C